



CABINET - CURRENT TRANSFORMER

04-01-17

Indoor - Outdoor

ER 3-100-E

240 Volts - 400 Amperes Maximum

PAGE 1 OF 5

- USE:**
1. For commercial and industrial installations, purchased and installed by customer.
 2. For use on the following services: 1 phase 3 wire 240 volts, 3 phase 3 wire 240 volts, 3 phase 4 wire 120/208 volts, 400 amperes maximum.
 3. To enclose 600 volt insulation class current transformers on indoor or outdoor meter installations.
 4. For installing 2 or 3 current transformers only with provisions to by-pass, remove, or replace while energized.

PREVIOUS REVISION 10-01-16	ORIGINATED 03-94	PREVIOUS NUMBER ER 15-442-A, 07-14-88
--------------------------------------	----------------------------	---

LATEST REVISION: Updated Approved Manufacturers with Milbank which recently purchased the Galva-Closure Products Co. C.T. Cabinet line.

SPECIFICATION:

1. GENERAL:

- 1.1 All current carrying parts should be designed on the basis of 1000 amperes per square inch capacity for copper and 700 amperes per square inch for aluminum.
- 1.2 Dimensions shown are minimum.
- 1.3 Spacing between opposite polarity live parts and between live parts and ground mounted on the same surface not over 600 volts shall be a minimum of 2 inches and 1 inch, respectively, in accordance with the National Electrical Code, 408.56, latest revision.
- 1.4 Cabinets shall be marked by the manufacturer with the voltage, current rating, number of phases for which they are designed, and with the manufacturer's name or trademark so as to be visible after installation, without disturbing interior parts or wiring, in accordance with National Electric Code, 408.58, latest revision.

CABINET - CURRENT TRANSFORMER

Indoor - Outdoor
240 Volts - 400 Amperes Maximum



2. SPECIFICATIONS FOR INDOOR OR OUTDOOR CABINET:

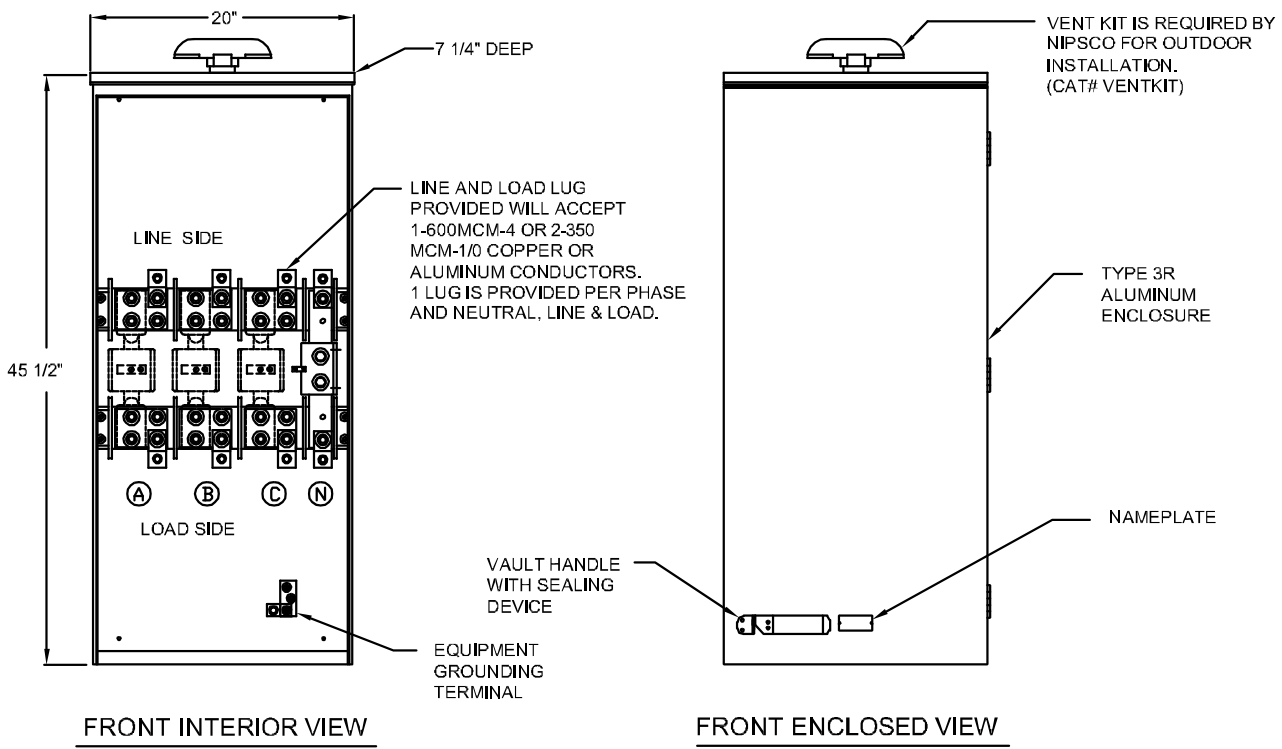
2.1 Cabinet:

2.1.1 Minimum Dimensions

- 34 Inches High
- 7 1/4 Inches Deep
- 25 Inches Wide - without Insulator Barriers
- 20 Inches Wide - with Insulator Barriers

2.1.2 Material - Minimum 14 gauge steel with enamel finish or 0.10" aluminum.

2.1.3 Front cover or door to be hinged and provided with sealing device so constructed that one padlock seal will effectively prevent opening or partially opening of the cover or door.





CABINET - CURRENT TRANSFORMER

Indoor - Outdoor

240 Volts - 400 Amperes Maximum

04-01-17

ER 3-100-E

PAGE 3 OF 5

2.2 Current Transformer Primary Connection Plate:

- 2.2.1 Material - 1/4" x 3" x 4" copper or aluminum.
- 2.2.2 Drilled and tapped for current transformer, cable lug and by-pass jumper bolts.
- 2.2.3 Drawing shows 6 plates for mounting 3 - 600 volt class current transformers.
When only 2 current transformers are required, omit neutral and provide center phase link.

2.3 Neutral Connection Plate:

- 2.3.1 Material - Copper or aluminum.
- 2.3.2 Drilled and tapped for cable lug bolts. #10-24 potential tap screw, and drilled for mounting bolts.

2.4 Bolts:

- 2.4.1 Material - Steel, zinc plated, 1/2" - 13 thread x 2-1/2" long with flat washer and hex head nut:
 - For mounting CT'S - 8 req'd for 2 CT's / 12 req'd for 3 CT's
 - For mounting cable lugs - 6 req'd for 2 CT's / 8 req'd for 3 CT's
 - For mounting jumper - 4 req'd for 2 CT's / 6 req'd for 3 CT's
- 2.4.2 Material - Steel, zinc plated 1/4" - 20 x 1-1/2" for mounting insulator bus, 8 req'd.
- 2.4.3 Material - Steel, zinc plated, #10 - 24 x 1/2" with washer, for potential tap.

2.5 Lugs:

- One hole cable terminal lug furnished for 500 KCM or larger
Copper - 6 req'd for 2 CT's / 8 req'd for 3 CT's.

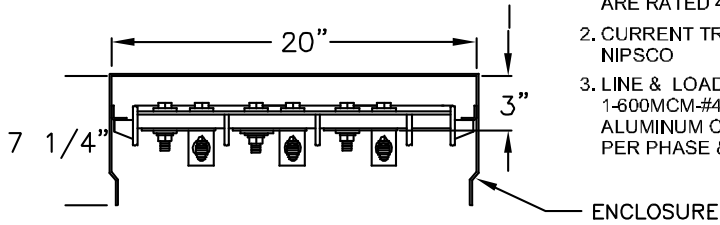
2.6 Knockouts / Hubs:

- Size and location by customer when required.

CABINET - CURRENT TRANSFORMER

Indoor - Outdoor

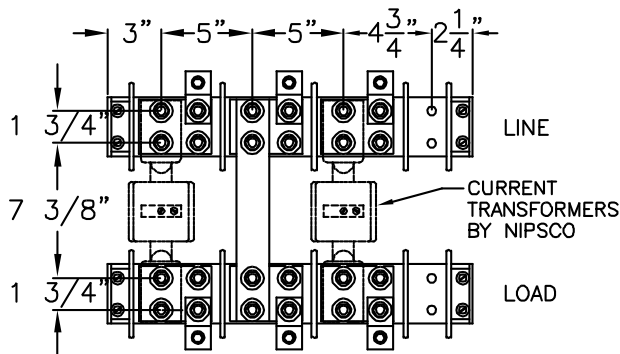
240 Volts - 400 Amperes Maximum



TOP VIEW

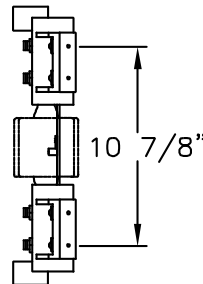
GENERAL NOTES:-

1. C/T AND LUG LANDING PADS AND NEUTRAL ARE RATED 400 AMPS.
2. CURRENT TRANSFORMERS PROVIDED BY NIPSCO
3. LINE & LOAD LUG PROVIDED WILL ACCEPT 1-600MCM-#4 OR 2-350MCM-1/0 COPPER OR ALUMINUM CONDUCTORS. 1 LUG IS PROVIDED PER PHASE & NEUTRAL AS SHOWN, LINE & LOAD.

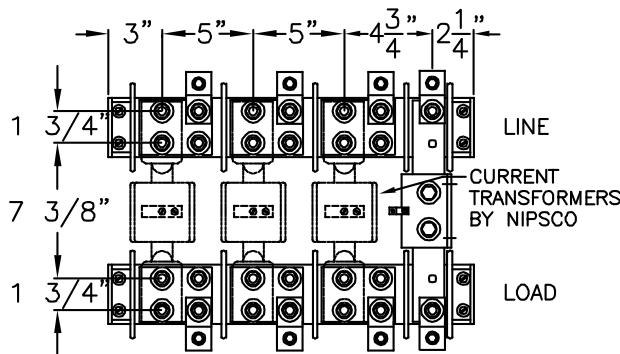


3 PHASE - 3 WIRE

FRONT VIEW

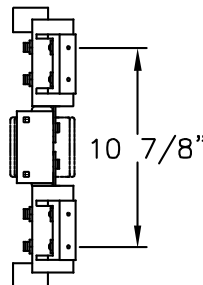


SIDE VIEW



3 PHASE - 4 WIRE

FRONT VIEW



SIDE VIEW



CABINET - CURRENT TRANSFORMER

Indoor - Outdoor

240 Volts - 400 Amperes Maximum

04-01-17

ER 3-100-E

PAGE 5 OF 5

3. ADDITIONAL SPECIFICATIONS FOR OUTDOOR CABINET

3.1 Cabinet:

- 3.1.1 The door or front cover shall be made rain-tight and top shall be protected with a rain shield.
- 3.1.2 Raintight screened vent shall be located in upper portion of the cabinet.
- 3.1.3 All conduit shall enter the cabinet through the sides or bottom or through raintight hub on top.
- 3.1.4 All hardware shall be rust resistant.

4. APPROVED MANUFACTURERS

Manufacturer	Phases	Wire	Number of CT's	Catalog Number
				Indoor / Outdoor
Erickson Electrical Equip. Co. 475 Bonnie Ln. Elk Grove Village, Illinois	1 or 3	3	2	1182-1*
	3	4	3	1182-2*
Milbank Manufacturing Co. 4801 Deramus Kansas City, Missouri 64141	1	3	2	NIP-413
	3	3	2	NIP-433
	3	4	3	NIP-434

* - Optional vent kit (CAT#VENTKIT) must be ordered and installed for outdoor installations.