



**CABINET - INSTRUMENT
TRANSFORMER**
Indoor - Outdoor
480 Volts - 400 Amperes Maximum

04-01-17
ER 3-120-F
PAGE 1 OF 4

- Use:**
1. For commercial and industrial installations, purchased and installed by customer.
 2. For use on the following services: 3 phase 3 wire 480 volts, 3 phase 4 wire 277/480 volts, 400 amperes maximum.
 3. To enclose 600 volt insulation class instrument transformers on indoor or outdoor metal installations.
 4. For installing 2 or 3 each of voltage transformers and current transformers with provisions to by-pass, remove or replace while energized.

PREVIOUS REVISION 10-01-16	ORIGINATED 03-94	PREVIOUS NUMBER ER 15-452-B, 03-28-90
--------------------------------------	----------------------------	---

LATEST REVISION: Updated Approved Manufacturers with Milbank which recently purchased the Galva-Closure Products Co. C.T. Cabinet line.

SPECIFICATION:

1. GENERAL:

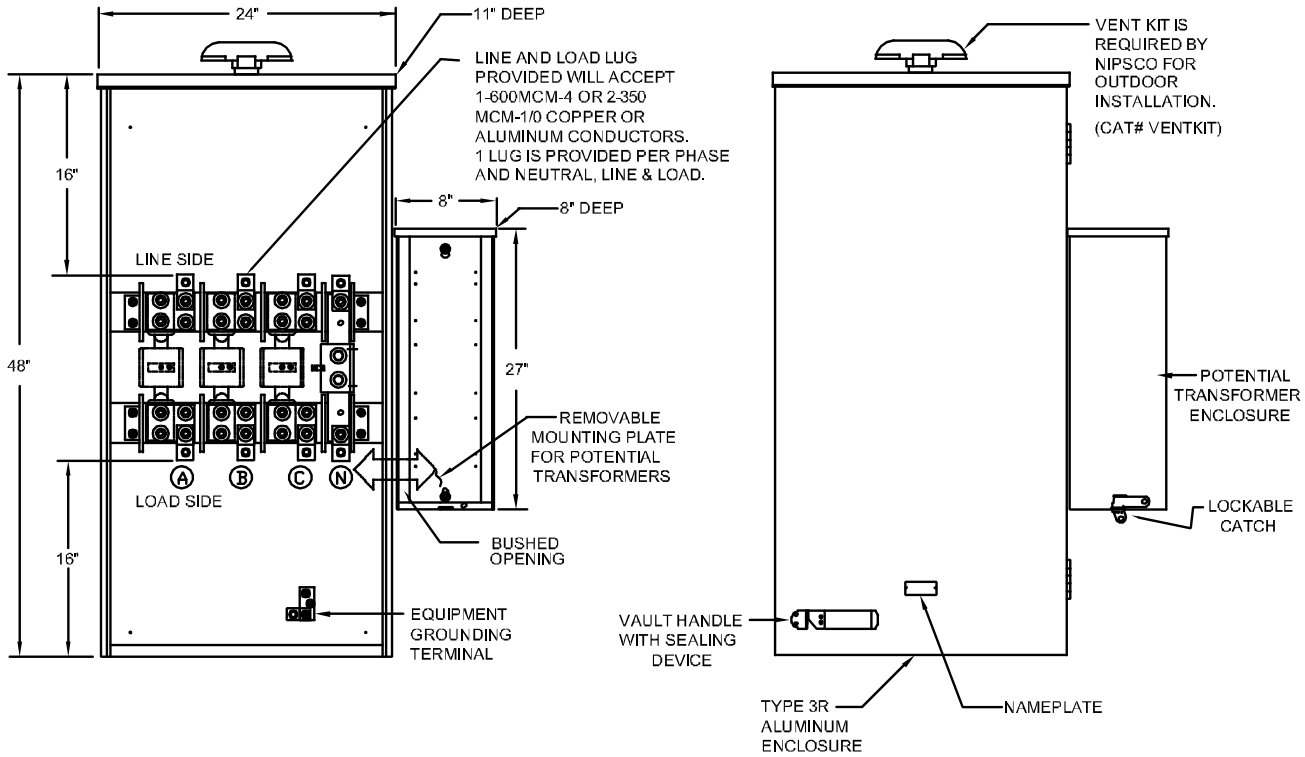
- 1.1 All current carrying parts should be designed on the basis of 1000 amperes per square inch for copper and 700 amperes per square inch for aluminum.
- 1.2 Dimensions shown are minimum.
- 1.3 Spacing between opposite polarity live parts and between live parts and ground, mounted on the same surface, shall be a minimum of 2 inches and 1 inch respectively in accordance with the National Electrical Code, 408.56, latest revision.
- 1.4 Cabinets shall be marked by the manufacturer with the voltage, current rating, number of phases for which they are designed, and with the manufacturer's name or trademark so as to be visible after installation, without disturbing interior parts or wiring, in accordance with National Electrical Code, 408.58, latest revision.

**CABINET - INSTRUMENT
 TRANSFORMER**
 Indoor - Outdoor
 480 Volts - 400 Amperes Maximum



2. SPECIFICATIONS FOR INDOOR OR OUTDOOR CABINET:

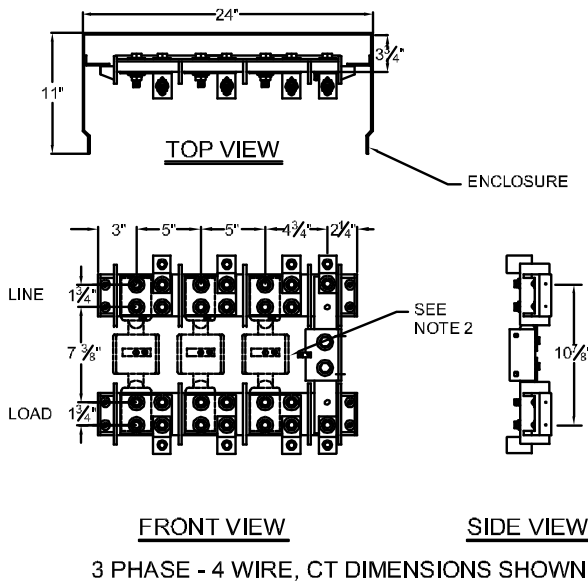
2.1 Cabinet Configuration:



FRONT INTERIOR VIEW

FRONT ENCLOSED VIEW

3 PHASE - 4 WIRE, CT CABINET SHOWN



GENERAL NOTES:-

1. CT AND LUG LANDING PADS AND NEUTRAL ARE RATED 400 AMPS.
2. CURRENT TRANSFORMERS ARE PROVIDED BY NIPSCO.
3. LINE AND LOAD LUG PROVIDED WILL ACCEPT 1-600MCM-#4 OR 2-350MCM-1/0 COPPER OR ALUMINUM CONDUCTORS. 1 LUG IS PROVIDED PER PHASE & NEUTRAL AS SHOWN, LINE & LOAD.



CABINET - INSTRUMENT TRANSFORMER

04-01-17
ER 3-120-F
PAGE 3 OF 4

Indoor - Outdoor
480 Volts - 400 Amperes Maximum

2.2 Cabinet Requirements:

2.2.1 Minimum Dimensions

40 Inches High

8 Inches Deep

24 Inches Wide - with Insulator Barriers

2.2.2 Material- Minimum 14 gauge steel with enamel finish or 0.10" aluminum.

2.2.3 Front cover or door to be hinged and provided with sealing device so constructed that one padlock seal will effectively prevent opening or partially opening of the cover or door.

2.3 Current Transformer Primary Connection Plate:

2.3.1 Material - 1/4" x 3" x 4" copper or aluminum.

2.3.2 Drilled and tapped for current transformer, cable lug and by-pass jumper bolts.

2.3.3 Drawing shows 6 plates for mounting 3 - 600 volt class current transformers.

When only 2 current transformers are required, omit neutral and provide center phase link.

2.4 Neutral Connection Plate:

2.4.1 Material - Copper or aluminum.

2.4.2 Drilled and tapped for cable lug bolts and #10-24 brass potential tap screw.

2.5 Bolts:

2.5.1 Material - Steel, zinc plated, 1/2" - 13 thread x 2-1/2" long with flat washer and hex head nut:

For Mounting CT'S - 8 Req'd. for 2 CT'S / 12 Req'd. for 3 CT'S

For Mounting Cable Lugs - 6 Req'd. for 2 CT'S / 8 Req'd. for 3 CT'S

2.5.2 Material - Steel, zinc plated, 1/4" - 20 x 1-1/2" with washer and hex head nut for mounting insulator bus, 8 req'd.

2.5.3 Material - Steel, zinc plated, #10 - 24 x 1/2" with washer, for potential tap.

2.6 Lugs:

One hole cable terminal lug furnished for 500 KCM or larger copper -

6 Req'd. for 2 CT'S

8 Req'd. for 3 CT'S

2.7 Knockouts--Hubs:

Size and location by customer when required.

2.8 Voltage Transformer Bracket:

Material - Steel or aluminum.

**CABINET - INSTRUMENT
TRANSFORMER**

Indoor - Outdoor

480 Volts - 400 Amperes Maximum

**2.9 Voltage Transformer Gutter:**

- 2.9.1 The gutter shall be made of the same material and have the same thickness as the main cabinet.
- 2.9.2 The cover of the gutter shall be adequately secured by screws and shall be sealable.
- 2.9.3 Conduit connections are not to be made on this gutter assembly.

3. ADDITIONAL SPECIFICATIONS FOR OUTDOOR CABINET:**3.1 Cabinet:**

- 3.1.1 The door or front cover shall be made raintight and top shall be protected with a rain shield.
- 3.1.2 Raintight screened vent shall be located in upper portion of the cabinet.
- 3.1.3 All conduit shall enter the cabinet through the sides or bottom or through raintight hub on top.
- 3.1.4 All hardware shall be rust resistant.

4. APPROVED MANUFACTURERS:

Manufacturer	Phases	Wire	Number of		Catalog Number
			PT's	CT's	Indoor / Outdoor
Erickson Electrical Equip. Co. 475 Bonnie Ln. Elk Grove Village, Illinois	3	3	2	2	CT43-C*
	3	4	3	3	CT44-C*
Milbank Manufacturing Co. 4801 Deramus Kansas City, Missouri 64141	3	3	2	2	NIP-463
	3	4	3	3	NIP-464

Since all the voltage transformers used with this cabinet are installed in a side gutter, the minimum cabinet width is reduced to 24 inches with 8" side gutter.

* - Optional vent kit (CAT#VENTKIT) must be ordered and installed for outdoor installations.