



# CABINET - INSTRUMENT TRANSFORMER

04-01-17  
**ER 3-150-D**  
PAGE 1 OF 4

Indoor - Outdoor, 480 Volts  
400 Ampere Maximum, Single Phase - 3 Wire

- USE:**
1. For rural and commercial installations purchased and installed by the Customer.
  2. For use on 480 volt, 1 phase, 3 wire; 400 ampere maximum.
  3. To enclose 600 volt insulation class current and potential transformers on indoor or outdoor meter installations.
  4. For installing one (1) double primary current transformer and one (1) potential transformer.

<b>PREVIOUS REVISION</b> 10-01-16	<b>ORIGINATED</b> 03-94	<b>PREVIOUS NUMBER</b> ER 15-468, 12-01-83
--------------------------------------	----------------------------	---

**LATEST REVISION:** Updated Approved Manufacturers with Milbank which recently purchased the Galva-Closure Products Co. C.T. Cabinet line.

## SPECIFICATION:

### 1. GENERAL:

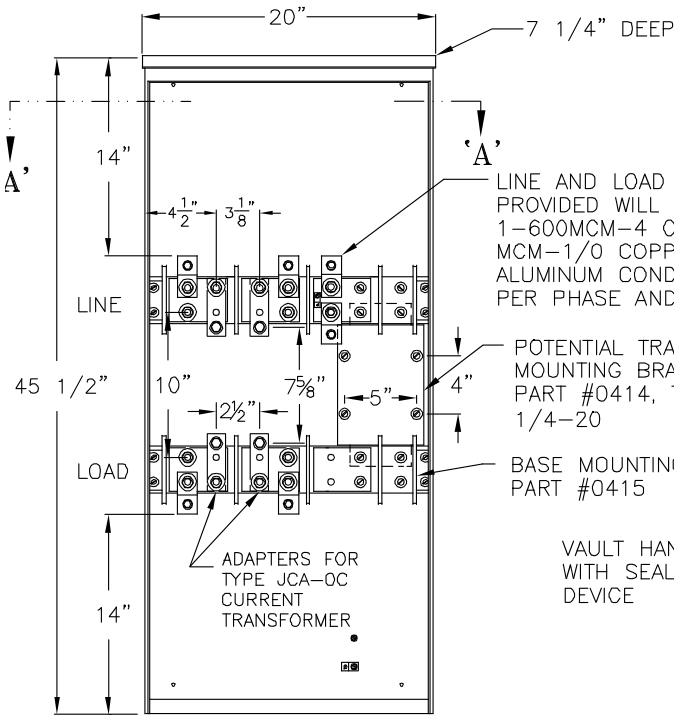
- 1.1 All current carrying parts should be designed on the basis of 1,000 amperes per square inch capacity for copper and 750 amperes per square inch for aluminum.
- 1.2 Dimensions shown are minimum.
- 1.3 Spacing between opposite polarity live parts and between live parts and ground mounted on the same surface not over 600 volts shall be a minimum of two (2) inches and one (1) inch, respectively, in accordance with the National Electric Code, 408.56, latest revision.
- 1.4 Cabinet shall be constructed of aluminum, galvanized steel, or cold-rolled steel with polyurethane enamel finish.
- 1.5 Cabinets shall be furnished completely assembled with all items as shown on drawings. The Company will furnish current and potential transformers.
- 1.6 Cabinets shall be marked by the manufacturer with the voltage, current rating, number of phases for which they are designed, and with the manufacturer's name or trademark so as to be visible after installation, without disturbing interior parts or wiring, in accordance with National Electrical Code, 408.58, latest revision.

**CABINET - INSTRUMENT  
 TRANSFORMER**



Indoor - Outdoor, 480 Volts  
 400 Ampere Maximum, Single Phase - 3 Wire

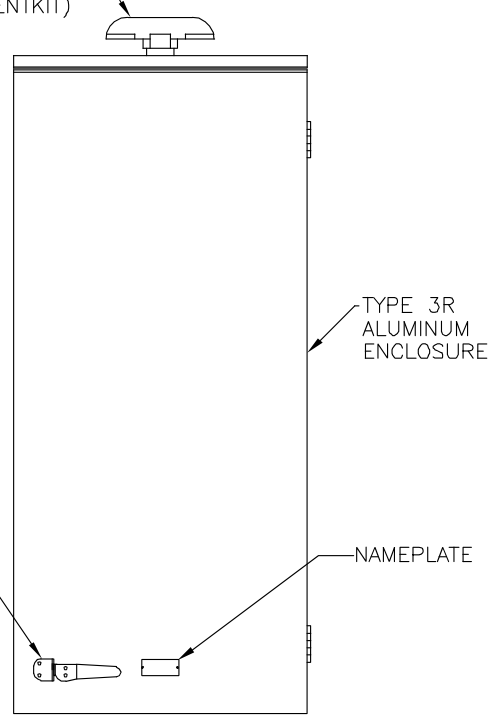
VENT KIT IS REQUIRED BY  
 NIPSCO FOR OUTDOOR  
 INSTALLATION.  
 (CAT#VENTKIT)



LINE AND LOAD TERMINAL PROVIDED WILL ACCEPT 1-600MCM-4 OR 2-250 MCM-1/0 COPPER OR ALUMINUM CONDUCTORS PER PHASE AND NEUTRAL

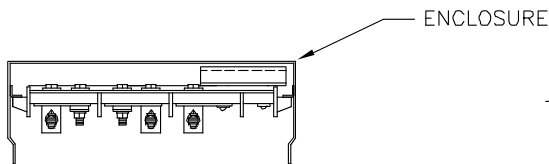
POTENTIAL TRANSFORMER MOUNTING BRACKET PART #0414, TAPPED 1/4-20

BASE MOUNTING BRACKET PART #0415



FRONT INTERIOR VIEW

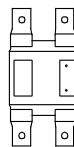
FRONT ENCLOSED VIEW



SECTION 'A'-'A'

CABINET WILL ACCEPT  
 TYPE JCA-OC CURRENT TRANSFORMER  
 (USE ADAPTERS PROVIDED)  
 OR  
 TYPE JAM-0 CURRENT TRANSFORMER  
 (ADAPTERS REMOVED)

NOTE: NIPSCO TO PROVIDED CURRENT TRANSFORMER AND POTENTIAL TRANSFORMER



DOUBLE BAR JCA-OC  
 CURRENT TRANSFORMER SHOWN

400 AMP, 1 PHASE-3 WIRE, 480 VOLT CT CABINET



# CABINET - INSTRUMENT TRANSFORMER

Indoor - Outdoor, 480 Volts  
400 Ampere Maximum, Single Phase - 3 Wire

04-01-17  
**ER 3-150-D**  
PAGE 3 OF 4

## 2. SPECIFICATIONS:

### 2.1 Cabinet:

- 2.1.1 Minimum Dimensions: 45 1/4" High  
7 1/4" Deep  
20" Wide
- 2.1.2 Material: Minimum 14 gauge galvanized or cold-rolled steel. Aluminum cabinets minimum 0.10" for the enclosure and .080" for the door.
- 2.1.3 Front cover or door to be hinged and provided with sealing device so constructed that one (1) padlock seal will effectively prevent opening or partially opening of the cover or door.
- 2.1.4 All hardware shall be rust resistant.
- 2.1.5 Cabinet shall be rated NEMA 3R. The door shall be made rain tight and top of doors shall be protected with a rain shield.

### 2.2 Current Transformer Primary Connection Plates:

- 2.2.1 Material: Copper or tin plated aluminum 1/4" x 3" x 4"
- 2.2.2 Drilled and tapped for 1/2" - 13 current transformer, cable lugs, and bypass jumper bolts, and one (1) #10 - 24 potential tap screw.
- 2.2.3 Four (4) plates are required.

### 2.3 Neutral Connection Plate:

- 2.3.1 Material: Copper or tin plated aluminum 1/4" x 1 3/4" x 3"
- 2.3.2 Drilled and tapped for 1/2" - 13 cable lugs.
- 2.3.3 One (1) required.

### 2.4 Potential Transformer Mounting Bracket:

- 2.4.1 Material: Steel or aluminum 6" x 14.5"
- 2.4.2 Drilled and tapped for 1/4" - 20 bolts as shown in drawing (four (4) holes required).

### 2.5 Lugs:

- 2.5.1 One hole cable terminal lug furnished for #4-600 KCM copper or aluminum.
- 2.5.2 Six (6) lugs required.

### 2.6 Bolts:

- 2.6.1 Material: Steel, zinc plated 1/2" - 13 thread x 2 1/2" long with flat washer and hex head nut.
  - 2.6.1.1 For CT - 4 required
  - 2.6.1.2 For Lugs - 6 required.
- 2.6.2 Material: Steel, zinc plated #10 - 24 x 1/2" with washer for potential tap.
  - 2.6.2.1 Four (4) required.

### 2.7 Equipment Ground Lug:

- 2.7.1 Material: Copper or aluminum #14 - 2/0 one hole cable terminal lug furnished.

04-01-17

**ER 3-150-D**

PAGE 4 OF 4

**CABINET - INSTRUMENT  
TRANSFORMER**



Indoor - Outdoor, 480 Volts  
400 Ampere Maximum, Single Phase - 3 Wire

**3. APPROVED MANUFACTURERS:**

<b>Manufacturer</b>	<b>Catalog Number</b>
Erickson Electrical Equipment Co. 475 Bonnie Ln. Elk Grove Village, Illinois	ENI 480-1*
Milbank Manufacturing Co. 4801 Deramus Kansas City, Missouri 64141	NIP-463DBCT

\* - Optional vent kit (CAT#VENTKIT) must be ordered and installed for outdoor installations.