

MICHIGAN CITY GENERATING STATION ASH POND CLOSURE

This project work is in advance of NIPSCO's plans to retire 100 percent of its remaining coal-fired generation by 2026 through 2028 and transition to lower-cost, reliable and cleaner generation including wind, solar and battery storage technology.

MICHIGAN CITY GENERATING STATION ASH POND CLOSURE

NIPSCO will begin to close the ash ponds at the Michigan City Generating Station (MCGS) in the spring of 2022, in accordance with the Indiana Department of Environmental Management (IDEM) pond closure permit issued in March 2021. The Coal Combustion Residuals (CCR) Rule requires the ash pond closures to be complete by November of 2023.

This plan will remove the remaining coal ash material from the station's five on-site ponds and replace it with clean fill, which meets the recently updated CCR Rule. The CCR Rule was designed by the Environmental Protection Agency (EPA) to ensure the safe disposal and management of coal ash from coal-fired electric generating stations across the nation, including a focus on groundwater quality.

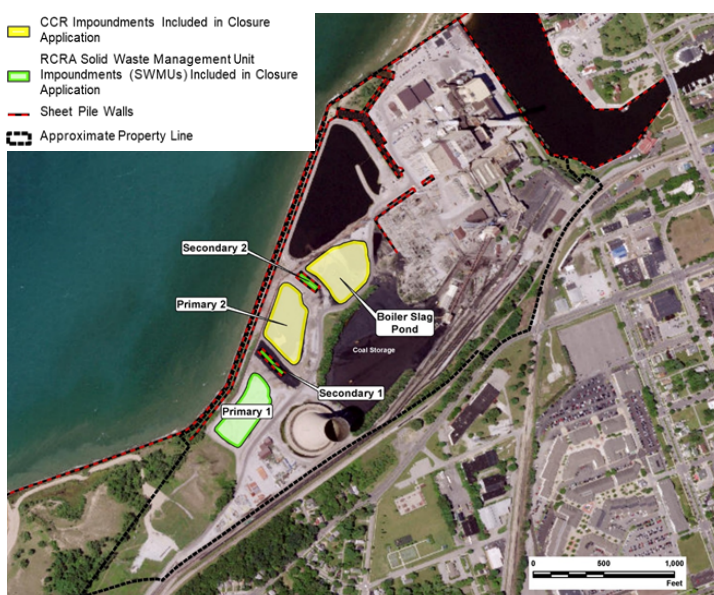
WHAT IS COAL ASH?

- *Coal ash is material left over when coal is burned to generate electricity - similar to the remains when wood is burned.*
- *Annually, approximately 14,500 tons of MCGS coal ash are beneficially reused and 50,000 tons are safely transported from Michigan City Generating Station to R.M. Schahfer Generating Station and placed in a CCR Rule regulated and IDEM permitted landfill.*

BENEFICIAL REUSE FOR SOME MATERIAL

- *Approximately 10 percent of the material being removed can safely be reused and repurposed for roof shingles, grit/sandblasting and other construction materials.*

MICHIGAN CITY GENERATING STATION SITE



PROTECTING HUMAN HEALTH & THE ENVIRONMENT AS COAL ASH PONDS ARE BEING RETIRED

- Protecting human health and the environment is vital and is a NIPSCO core value. The practice of safely transporting ash from NIPSCO's Michigan City Generating Station to the R.M. Schahfer Generating Station has been in place for decades and is part of NIPSCO's day-to-day operations. The ash pond closure that will be conducted is required by the EPA's CCR Rule. The CCR Rule is designed by the EPA to ensure the safe management and disposal of coal ash at coal-fired electric generating stations across the nation.
- Additionally, there are numerous ground water monitoring points in place today - maps and sampling results are publicly available on our CCR web site (<https://www.nipSCO.com/our-company/about-us/our-environment/ccr-rule-compliance>) and on Indiana Department of Environmental Management (IDEM)'s web site. Once the ash ponds are closed, additional groundwater monitoring and assessment, with IDEM oversight, will determine what additional long-term corrective action and monitoring are appropriate at the site.

For more information and a list of frequently asked questions on this project work, visit [NIPSCO.com/environment](https://www.nipSCO.com/environment) and reference CCR Data

